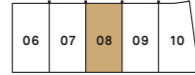
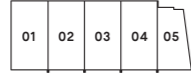


# St. Arbour

## Position



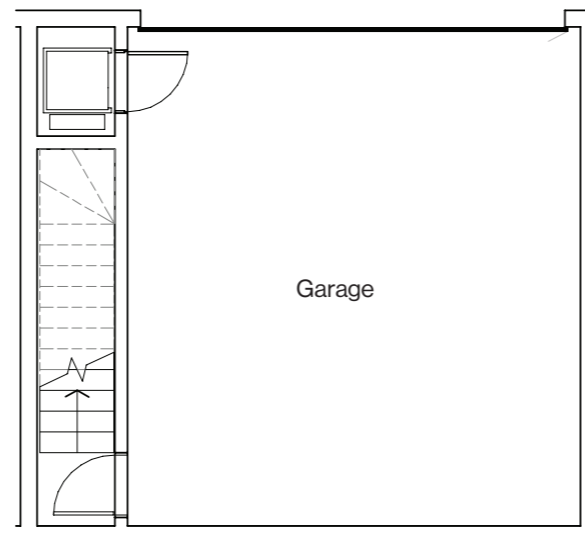
## Scale



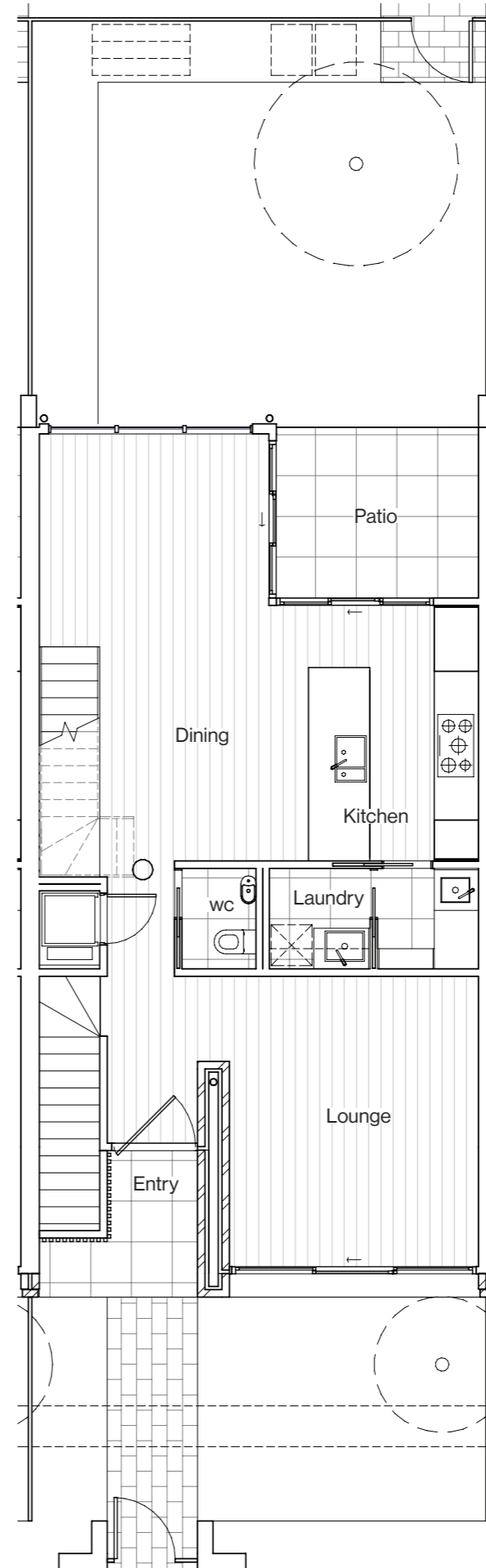
## North



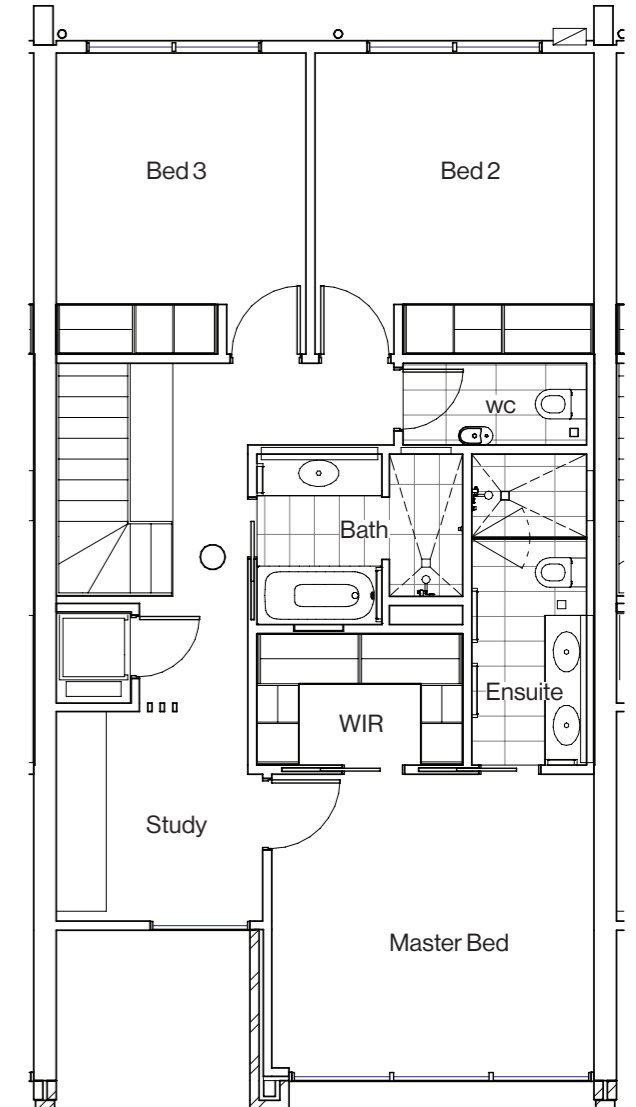
Bedrooms	3 + Study
Bathrooms	2.5
Car Spaces	2
Living	147.3 m <sup>2</sup>
Alfresco	11.2 m <sup>2</sup>
Courtyard Front	40 m <sup>2</sup>
Courtyard Back	27 m <sup>2</sup>
Garage	38.4 m <sup>2</sup>



Basement



Ground



Level 1

## independent

INDEPENDENT PROPERTY GROUP DO NOT GUARANTEE, WARRANT OR REPRESENT THAT THE INFORMATION CONTAINED IN THIS ADVERTISEMENT AND MARKETING DOCUMENT IS CORRECT. ANY INTERESTED PARTIES SHOULD MAKE THEIR OWN ENQUIRIES AS TO THE ACCURACY OF THE INFORMATION. WE EXCLUDE ALL IMPLIED OR IMPLIED TERMS, CONDITIONS AND WARRANTIES ARISING OUT OF THIS DOCUMENT AND ANY LIABILITY FOR THE LOSS OR DAMAGE ARISING THERE FROM. THIS LAYOUT MAY BE SUBJECT TO MINOR AMENDMENTS AND DIMENSIONAL CHANGES TO SUIT FINAL WORKING DRAWINGS AND GRID LAYOUT. APARTMENT AREA HAS BEEN CALCULATED USING EPSDD GUIDELINES. AREA MEASURED FROM CENTRE LINE OF PARTY WALLS AND OUTSIDE FACE OF EXTERNAL WALLS.